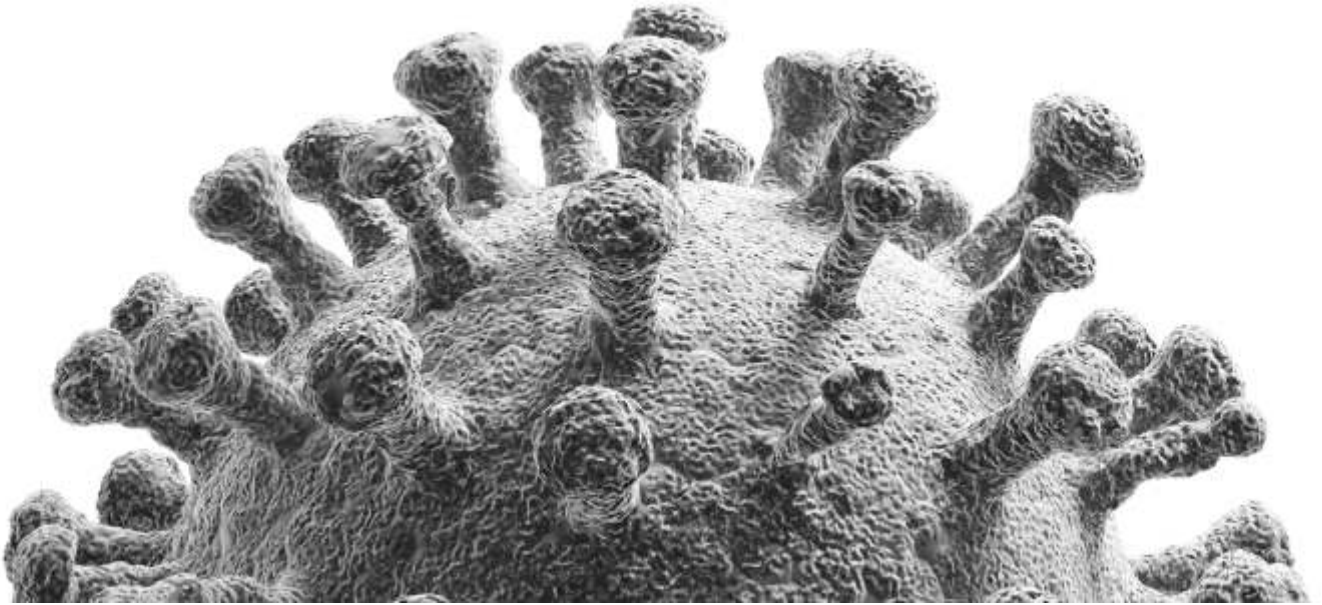


CoviLamp™



INTRODUCTION

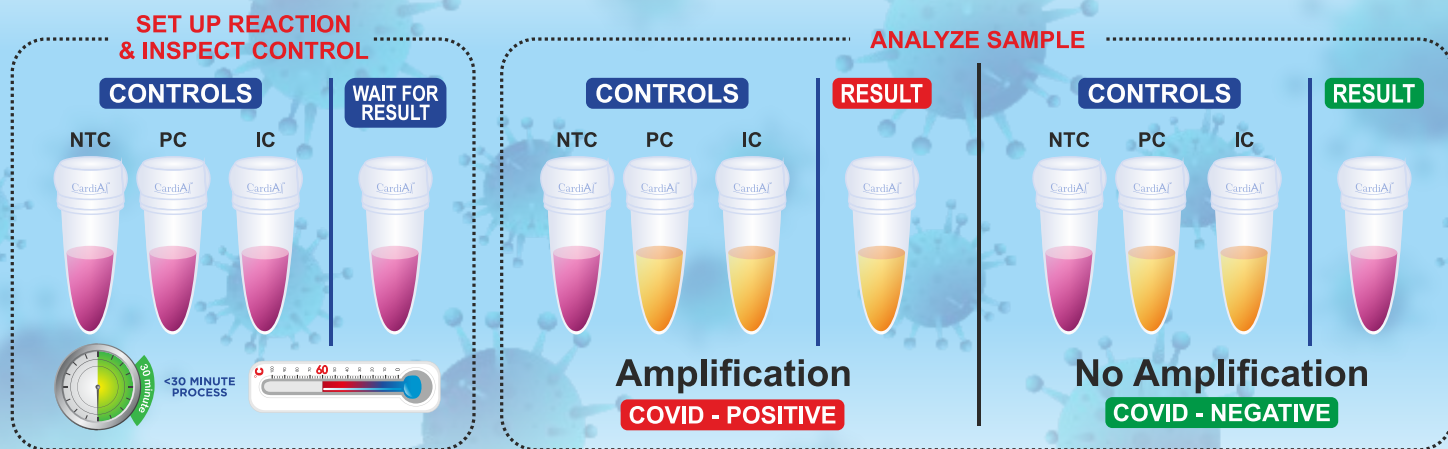
The global pandemic of COVID-19 has challenged health-care systems worldwide. Screening of symptomatic and asymptomatic carriers to contain the spread of the disease to vulnerable individuals who suffer severe and life threatening symptoms is vital. To control the spread of COVID-19, we need to identify COVID-19 infected individuals as well as asymptomatic carriers. Screening relies on sensitive and accurate detection of the SARS-CoV-2 viral RNA, which is responsible for COVID-19. RT-PCR, the conventional lab-scale method of viral RNA detection, is time consuming, requires specialized training and advanced equipment. With CardiAI's

CoviLamp™ (SARS-CoV-2 RNA Isothermal Amplification Colorimetric Assay Kit), the viral RNA can be detected in as less than 30 minutes depending upon the viral load criteria of individual lab with less specialized equipment and minimal training. The CoviLamp™ assay kit uses reverse transcription loop-mediated isothermal amplification (RT-LAMP), which amplifies SARS-CoV-2 RNA faster than traditional RT-PCR with a colorimetric endpoint readout. Detection of viral RNA can be performed by a plate reader capable of measuring absorbance at 430 nm and 560 nm.



ASSAY FORMAT

SENSITIVITY :	4 viral RNA copies / μ L	COMPATIBLE SAMPLE TYPES :	Extracted RNA (i.e., Nasopharyngeal, Oropharyngeal, Saliva)	METHOD OF TEST :	Reverse transcription loop- mediated isothermal amplification (RT-LAMP)	METHOD OF DETECTION:	Qualitative (by eye) & Semi-Quantitative (with plate reader)
---------------	------------------------------	---------------------------	---	------------------	---	----------------------	--



NTC = Non-Template Control
PC = Positive Control
IC = Internal Control

FEATURES:

- Rapid** : Detect SARS-CoV-2 RNA in as less than 30 minutes.
- Affordable** : No expensive PCR instrument required.
- Easy to use** : Read results by eye or with a plate reader.
- Sensitive** : 100% detection of at least 4 copies/ μ L of SARS-CoV-2 RNA.
- Stable** : Contains reagents to reduce DNA carry-over contamination.
- Specificity** : No cross-reactivity with respiratory viruses prevalent in the population.

CardiA™

201-3151 27 St NE Calgary, AB, T1Y 0B4 Canada
Customer Care : 1-800-403-8122

ISO
13485:2016

For more information & inquiries email : admin@cardiai.com | For technical support email : technicalsupport@cardiai.com

Copyrights © 2020